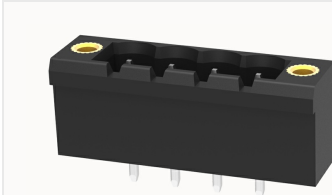


## Overview

## Product information

**2EDGVM-THR-5.08-10030002659**

Pluggable Terminal Blocks nominal current 20A. Rated voltage (III/3): 320V, pitch: 5.08mm, Color: black, Contact surface: Tin

## Product advantages

- ✓ Suitable for SMT welding process
- ✓ The plug direction is perpendicular to PCB, Can meet the needs of different connectors

## Product certification



## Technical data

## Product drawing

## 3D model

□

## Processing notes

Process

Reflow soldering/wave soldering/manual soldering

## Electrical parameters UL

Rated voltage (B)	300V
Rated voltage (D)	300V
Rated current (B)	15A
Rated current (D)	10A

## Electrical parameters IEC

Rated voltage	320V
Rated current	20A

Rated voltage(III/2)	320V
Rated surge voltage(III/2)	4KV

Item properties

Connection direction	90°
Type of installation	PCB welding
Pin arrangement	Single row in a straight line
Pitch	5.08mm
Number of potentials	4
Pluggable or not	Yes
Number of rows	1

Material data

Environmental items	Compliant with REACH/RoHS
Contact material	copper
Contact point metal surface	tin-plated
Contact zone metal surface	tin-plated
Insulation Materials	High temperature resistant materials
Insulating material group	IIIa
Flammability rating	UL94V-0

Mechanical tests

Test Specification	IEC61984/ UL1059
--------------------	------------------

Environmental data

Ambient temperature (operation)	-40℃~130℃(depending on derating curve)
---------------------------------	--

Accessories

Tool
------

Screwdriver	/
Operating tool	/

Accessories

Coding strip	/
Bridge	/
Marking strip	/
Others	/

Business data

Order number	10030002659
Packing unit	
Minimum order quantity	
Products weight (without packaging)	