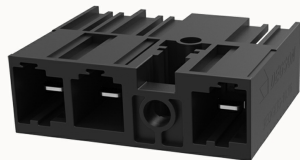


Overview

Product information



9EDGRS-10.16-GR-10030010678

Pluggable terminal blocks, With grounding function, Rated current: 78.3A. Rated voltage (III/2) : 1000V, pitch: 10.16mm, Color: black, Contact surface : Ag

Product advantages

- ☑ Meet the requirements of UL 508/UL840 standards for 600 V products
- ☑ Meet the requirements of IEC 61800-5-1 for electric shock protection
- ☑ The design of the middle flange reduces the space of at least one circuit compared to other solutions.

Product certification



Technical data

Product drawing

3D model

□

Packaging information

Type of packaging

box-packed

Climatic test

IP class

IP20

Processing notes

Process

Wave soldering/manual soldering

Electrical parameters UL

Rated voltage (B)

300V

Rated voltage (C)

300V

Rated voltage (D)	600V
Rated current (B)	57A
Rated current (D)	5A
Rated current (C)	57A

Electrical parameters IEC

Rated voltage	1000V
Rated voltage(III/3)	690V
Rated current	78.3A
Rated voltage(III/2)	1000V
Rated voltage(II/2)	1000V
Rated surge voltage(III/3)	8KV
Rated surge voltage(III/2)	8KV
Rated surge voltage(II/2)	6KV

Item properties

Connection direction	0°
Type of installation	PCB welding
Pin arrangement	Three rows in a straight line
Pitch	10.16mm
Number of potentials	3
Pluggable or not	Yes
Number of rows	1

Material data

Environmental items	Compliant with REACH/RoHS
Contact material	copper
Contact zone metal surface	Silver plated

Insulation Materials	PA66
Relative tracking index CTI	600V
Shell color	Black
Insulating material group	I
Flammability rating	UL94V-0

Mechanical tests

Test Specification	IEC61984/ UL1059
--------------------	------------------

Environmental data

Ambient temperature (operation)	-40℃~130℃(depending on derating curve)
---------------------------------	--

Accessories

Tool

Screwdriver	/
Operating tool	/

Accessories

Coding strip	/
Bridge	/
Marking strip	/
Others	/

Business data

Order number	10030010678
Packing unit	180
Minimum order quantity	
Products weight (without packaging)	16.1

