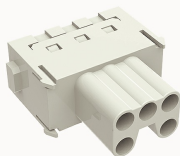


## Overview

### Product information



**DME-005-FS-21020000131**

Heavy-duty insert, Number of contacts: 5, Dimension: 3A, Rated voltage : 400V, Rated current: 16A, Female insert, Cage clamp connector

### Product advantages

- ☑ Spring cage connection technology, high vibration resistance;
- ☑ No special tools required, maintenance-free ;
- ☑ Less materials, easy to manage;
- ☑ Modular products, easy to assemble and maintain .

### Product certification



## Technical data

### Product drawing

### 3D model

□

### Marking

classification	Insert
Series	DM

### versions

Connection method	Crimping connection
Female/Male	Female
Dimension	1 module
Number of positions	5
PE Contacts	No

Material characteristics

Material (insert)	Polycarbonate (PC)
Materia (Contact)	Copper alloy
Surface (Contact)	Silver plated
Flammability rating	V-0
color	Grey/White (RAL 7032)
RoHS	Comply with RoHS exemptions

Electrical parameters

Rated current	16A
	400V
Rated pulse voltage	6KV
Pollution level	3
On the basis of UL /CSARated current	600V
Insulation resistance	≥10000MΩ
Contact resistance	≤0.3/6mΩ
Temperature range	-40℃~+125℃
working life-mating cycles	≥500 time
Conductor cross sections (mm²)	0.14-2.5mm²
Conductor cross sections(AWG)	26-14AWG

Standards

Connection meets standards	DIN EN 60664 DIN EN 61984
----------------------------	---------------------------

Accessories

Accessories

Screwdriver	/
-------------	---

Business data	
Order number	21020000131
Packing unit	100
Minimum order quantity	5
Products weight (without packaging)	17