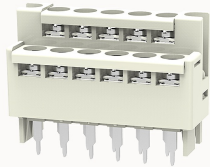


Overview

Product information

**DG24B-1-12060000163**

Double-layer barrier terminal blocks, Rated current: 8A. Rated voltage (UL): 300V, Cross section: 22~14AWG, pitch: 7.62mm, Color: gray, Contact surface: Tin

Product advantages

- ☒ Screw connection for worldwide use
- ☒ Fence type wiring structure, stable and reliable connection
- ☒ Used in industrial control field to save equipment installation space

Product certification

Technical data

Product drawing

3D model

□

Processing notes

Process

Wave soldering/manual soldering

Connection capacity

AWG

22~14AWG

Electrical parameters UL

Rated voltage (B)

300V

Rated voltage (D)

300V

Rated current (B)

8A

Rated current (D)

8A

Item properties

Type of installation	PCB welding
Pin arrangement	Double-row of misalignment
Connection method	Screw connection
Screwdriver	slotted-phillips screwdriver
screw thread	M3
Pitch	7.62mm
Number of potentials	11
Pluggable or not	Yes
Number of rows	2

Material data

Environmental items	Compliant with REACH/RoHS
Contact material	Copper alloy
Contact point metal surface	tin-plated
Contact zone metal surface	Gold plate
Insulation Materials	PBT
Insulating material group	IIIa
Flammability rating	UL94V-0

Mechanical tests

Test Specification	UL1059
--------------------	--------

Environmental data

Ambient temperature (operation)	-40°C~125°C(depending on derating curve)
---------------------------------	--

Accessories

Accessories

--	--

Business data	
Order number	12060000163
Packing unit	72
Minimum order quantity	/
Products weight (without packaging)	34.2