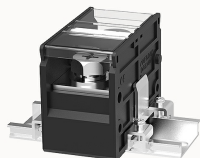


Overview

Product information



DGR240-10A(H)-12010000140

Transfer barrier terminal blocks, Rated current: 240A. Rated voltage (UL) : 600V, Cross section: 4~250 Kcmil, pitch: 36mm, Color: black, Contact surface: Tin

Product advantages

- ☒ Screw connection for worldwide use
- ☒ Fence type wiring structure, stable and reliable connection
- ☒ Provide the cabinet and panel electrical transfer connections

Product certification



Technical data

Product drawing

3D model

□

Connection capacity

AWG	4~250 Kcmil
Torque	4N.m

Electrical parameters UL

Rated voltage (B)	600V
Rated voltage (C)	600V
Rated voltage (D)	600V
Rated current (B)	240A
Rated current (C)	240A

Electrical parameters IEC

Rated current	1000V
	269A

Item properties

Type of installation	panel
Pin arrangement	Double-row in a straight line
Connection method	Screw connection
Screwdriver	Phillips screwdriver
screw thread	M10
Pitch	36mm
Number of potentials	1
Pluggable or not	no
Number of rows	1

Material data

Environmental items	Compliant with REACH/RoHS
Contact material	Copper alloy
Contact point metal surface	Nickel plating
Insulation Materials	PC
Insulating material group	IIIa
Flammability rating	UL94V-0

Mechanical tests

Test Specification	UL1059
--------------------	--------

Environmental data

Ambient temperature (operation)	-40°C~125°C(depending on derating curve)
---------------------------------	--

Accessories

Accessories

--	--

Business data

Order number	12010000140
Packing unit	5
Minimum order quantity	/
Products weight (without packaging)	216.7