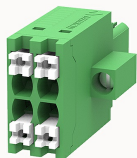


Overview

Product information



15EDGKNHBM-3.5-10020002297

Pluggable terminal blocks, Rated current: 13.5A. Rated voltage (III/2) : 160V, Cross section: 1.5mm², pitch: 3.5mm, Color: green, Contact surface : Tin

Product advantages

- ☒ Adapt to multi-type sockets, device design is highly flexible
- ☒ PUSH-IN connection technology, fast wiring
- ☒ High-density double row, compact structure

Product certification



Technical data

Product drawing

3D model

□

Connection capacity

Conductor cross section solid	0.2~1.5mm ²
Conductor cross section flexible	0.2~1.5mm ²
AWG	28~16AWG
Strip length	11mm

Electrical parameters UL

Rated voltage (B)	300V
Rated voltage (D)	300V
Rated current (B)	10A

Rated current (D)	10A
Rated current (C)	10A

Electrical parameters IEC

Rated voltage	160V
Rated voltage(III/3)	160V
Rated current	13.4A
Rated voltage(III/2)	160V
Rated voltage(II/2)	320V
Rated surge voltage(III/3)	2.5KV
Rated surge voltage(III/2)	2.5KV
Rated surge voltage(II/2)	2.5KV

Item properties

Connection direction	0°
Connection method	Push-in spring connection
Pitch	3.5mm
Number of potentials	4
Pluggable or not	Yes
Number of rows	2

Material data

Environmental items	Compliant with REACH/RoHS
Contact material	Copper alloy
Contact point metal surface	tin-plated
Contact zone metal surface	tin-plated
Insulation Materials	PA66
Insulating material group	I

Flammability rating	UL94V-0
Mechanical tests	
Test Specification	IEC61984/ UL1059
Environmental data	
Ambient temperature (operation)	-40℃~105℃(depending on derating curve)

Accessories	
Accessories	
Coding strip	/
Bridge	/
Marking strip	/
Others	15EDG-PWI
Tool	
Operating tool	/
Screwdriver	/

Business data	
Order number	10020002297
Packing unit	150
Minimum order quantity	30
Products weight (without packaging)	4.39