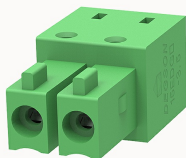


Overview

Product information



15EDGB-3.5-10020000025

Pluggable terminal blocks, Rated current: 7A. Rated voltage (III/2) : 250V, pitch: 3.5mm, Color: green, Contact surface : Tin

Product advantages

- ☒ PCB welding, plug direction is perpendicular to the PCB
- ☒ Multiple contacts to provide touch protection for connection

Product certification



Technical data

Product drawing

3D model

□

Processing notes

Process

Wave soldering/manual soldering

Electrical parameters UL

Rated voltage (B)	300V
Rated voltage (D)	300V
Rated current (B)	8A
Rated current (D)	8A

Electrical parameters IEC

Rated voltage	250V
Rated voltage(III/3)	160V

Rated current	7A
Rated voltage(III/2)	250V
Rated voltage(II/2)	320V
Rated surge voltage(III/3)	2.5KV
Rated surge voltage(III/2)	2.5KV
Rated surge voltage(II/2)	2.5KV

Item properties

Connection direction	90°
Type of installation	PCB welding
Pin arrangement	Double-row in a straight line
Pitch	3.5mm
Number of potentials	2
Pluggable or not	Yes
Number of rows	1

Material data

Environmental items	Compliant with REACH/RoHS
Contact material	Copper alloy
Contact zone metal surface	tin-plated
Insulation Materials	PA66
Insulating material group	I
Flammability rating	UL94V-0

Mechanical tests

Test Specification	IEC61984/ UL1059
--------------------	------------------

Environmental data

Ambient temperature (operation)	-40℃~105℃(depending on derating curve)
---------------------------------	--

Accessories

Accessories

Coding strip	/
Bridge	/
Marking strip	/
Others	/

Tool

Operating tool	/
Screwdriver	/

Business data

Order number	10020000025
Packing unit	4785
Minimum order quantity	30
Products weight (without packaging)	0.61